



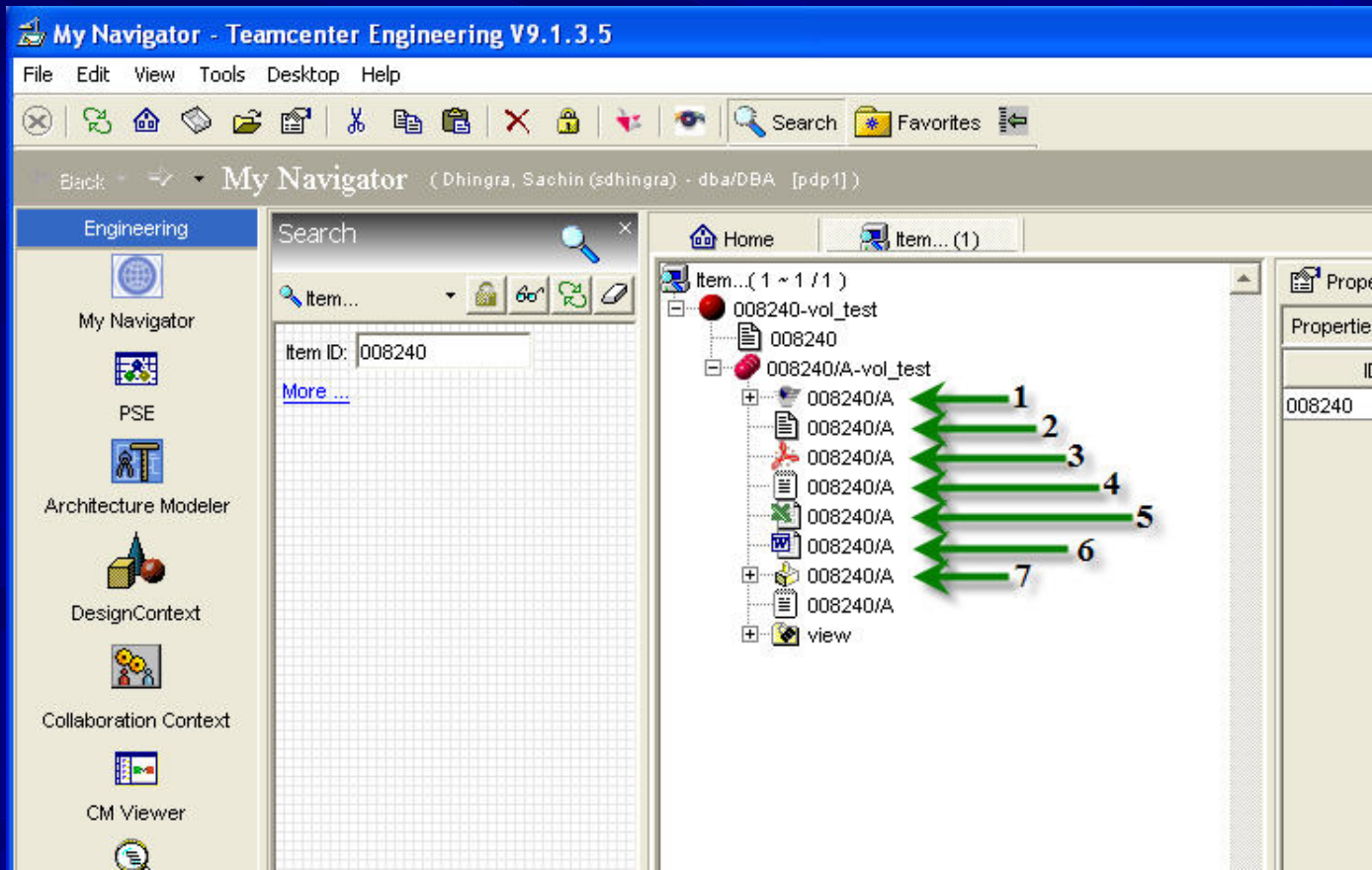
CONTRACT CAD services

Basic Team Center Training

Understanding how to attach text files and Microsoft files to the Cad models utilizing Teamcenter Engineering

Expand the searched Item and understand the different attachments in the Item Revision

- 1) Jt/VisView model dataset
- 2) Item Revision Master Form
- 3) PDF dataset
- 4) Text dataset
- 5) MSEXcel dataset
- 6) MSWord dataset
- 7) UGMaster dataset



■ Product Data Management

- Understanding PDM (Product Data Management)
- Teamcenter Basic Training presentations
 - Start Teamcenter Engineering
 - Identify Key Areas of the Portal Interface
 - Modify Properties Columns in Navigator
 - Items and Item Revisions
 - Execute searches to find Items and view Datasets
 - Use of PSE to for BOM view and Reports

■ Definitions of (PDM)

- Product Data Management (PDM) is focused on information relative to core operations of a product-based company. PDM is one element of a larger evolving field of Product Lifecycle Management (PLM).
- Within PDM the focus is on managing and tracking the creation, change and archive of all information related to a product. The information being stored and managed (on one or more file servers) will include engineering data such as; CAD models, drawings and their associated documents.
- "Associated documents" is a collector term for: requirements, specifications, manufacturing plans, assembly plans, test plans, test procedures and results.

■ TCE-PDM Benefits

- Reduces duplicate data.
- Simplifies finding data and distributing data to those who need it.
- Allows quick, lightweight viewing of models, which is especially useful for verification when reviewing changes.
- Provides revision control and maintains history of a product's development evolution.
- Manages assemblies and relationships between parts.
- Easily builds a Bills of Material (BOM).
- Establishes relationships between requirements, specifications, and parts.
- Provides access control and vaulting to ensure integrity of data.



CONTRACT CAD services

Basic I-Deas TDM Best Practices Training

I-Deas TDM utilizing its fullest and fastest capabilities

- 1. Create two TDM's one for Aerospace and the other for Military work. Why? Because the TDM gets too full of data and slows down which slows production and raises unneeded cost. (Old versions should be purged from the TDM's on a monthly basis to ensure good practice.)
 - Understanding TDM (Team Data Management)
 - CCS will train a person from your company to become a TDM manger to update in library all cad files.
 - CCS will train and mentor a Data Exchange person to import and export files to Nasa
 - We have a great deal of experience with providing best practice TDM methods for large corporations and also exporting Released legacy data into Team Center.
 - We will provide solutions for your organization to optimize performance reduce cost utilizing our best practice methods that we have established for other large corporations.

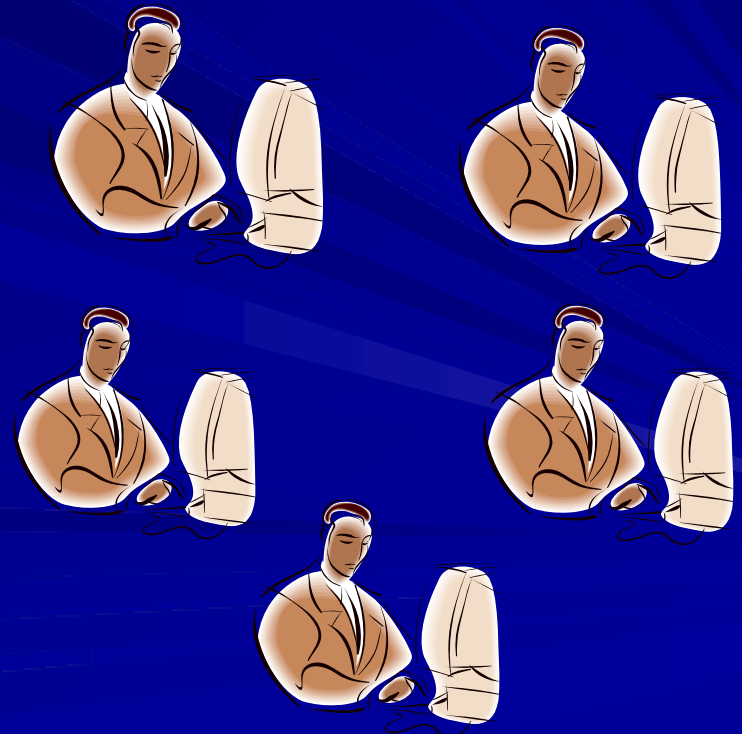
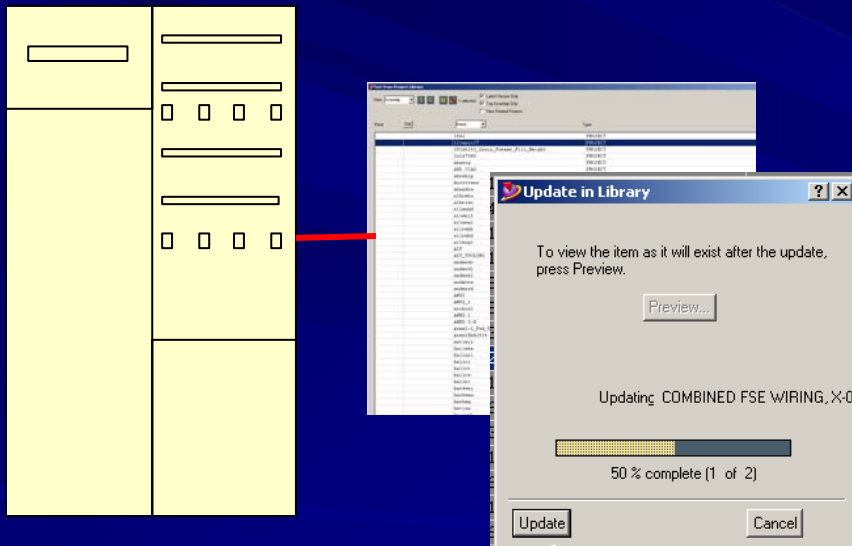
Please see some
examples on the next
pages.

Example: Best Practice that was created by CCS.

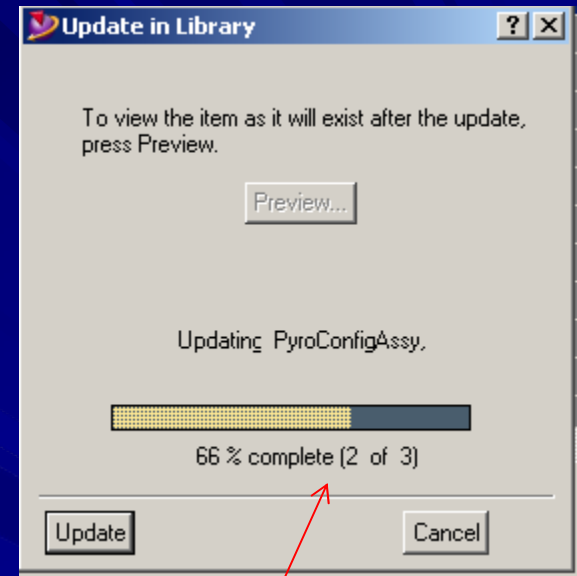
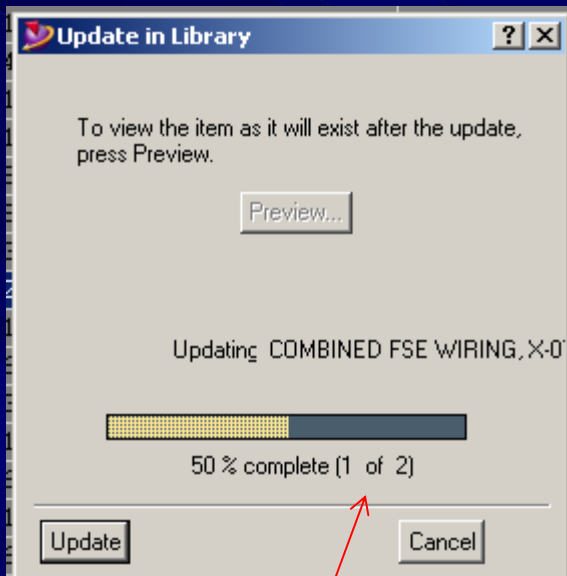
Updating in the TDM is usually done by a data manager on a daily or weekly basis

This allows the D.E to work fast and effectively on latest and greatest cad models at all times Engineering is wasting time updating data at there local desks. This updating task should be preformed on the server side to reduce wasted time and cost.

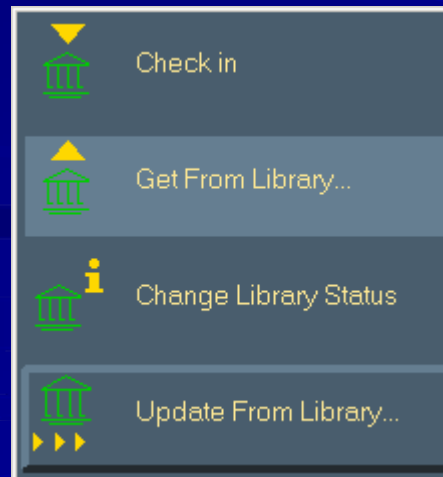
Updating on the server end allows all engineering to have updated information



This allows the engineers to pull the latest level data.



Updating in the library tells you how many parts were Changed or Revised in that Assembly.



Rfs		FWD_ASSY_CONTROL_PART	PART	3	
Rf1		NOSE_CAP_ASSY-12112007	ASSEMBLY	3	10150_0001_105_ASM
		10150_0018_101_ASM...	ASSEMBLY	2	10150_0018_101_ASM
		MID_RING_ASSY-AFT...	ASSEMBLY		
		MID_RING_ASSY-FWD...	ASSEMBLY		
		10150_0001_105_ASM Duplicate1	PART		
		10150_0002_001_SM	PART		
		10150_0003_001_SM	PART		
		10150_0006_001	PART		
		10150_0007_001	PART		
		10150_0015_001	PART		
		10150_0016_001	PART		
		10150_0017_001	PART		
		10150_0019_001	PART		
		10150_0019_002	PART		
		10150_0023_001	PART		

Modify Library Relationship

Name: NOSE_CAP_ASSY-12112007
 Part #: 10150_0001_105_ASM

Current Status: Reference Latest

Change to: Checked out
 Reference latest
 Reference specific
 Local copy

Notify when original changes

Change Cancel

Its good practice to know what state your Assembly's and parts are in after you bring them into your model file...

Examples We Can Provide

Out of date

Manage bins

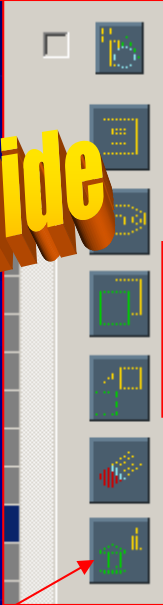
View: Assembly

Stat

Rf1
Rf1
Rf1
Rf1*
Rf1*
Rf1*
Rf1*
Rfs
Rf1

Update Data Locally in your model file if you see this or notify your TDM manager to let him know these parts should be updated.

Change this Rfs to RFL by clicking here



RFS- Means your are trying to Reference a specific version. Its Good practice to always change it to Reference the Latest Cad data.

Local Copy- this will create an associative copy meaning it will notify you when a change has occurred by a designer. Or you can break all the relationships by un checking this off.